



MONTHLY MEMBERSHIP PROGRESS REPORT

District 324A8

Results as of: 05/31/2018

GMT: N S SANKAR

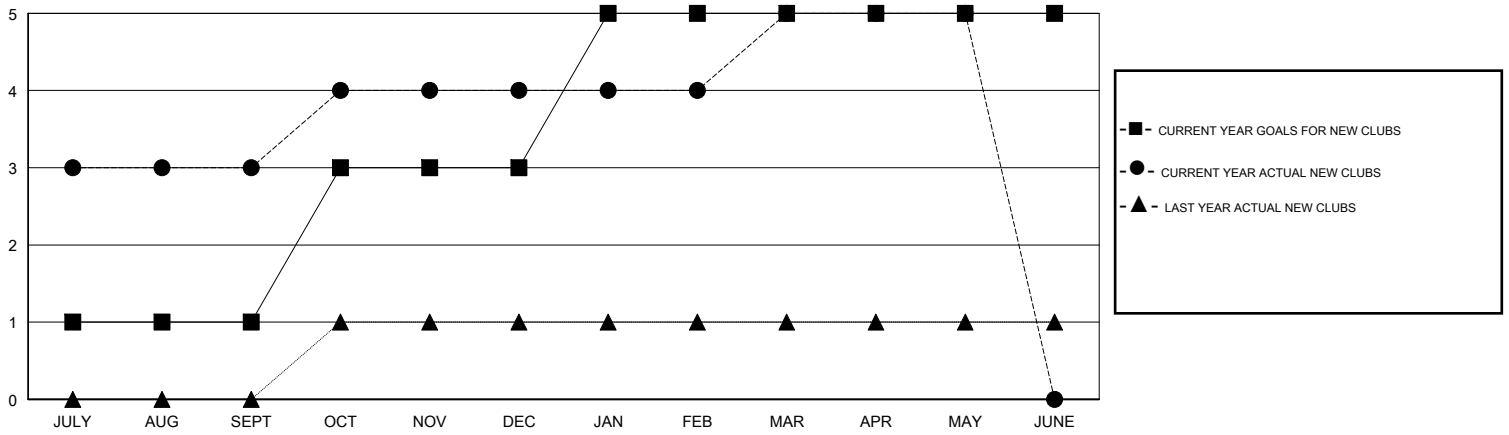
LOCATION INDIA

GMT CA

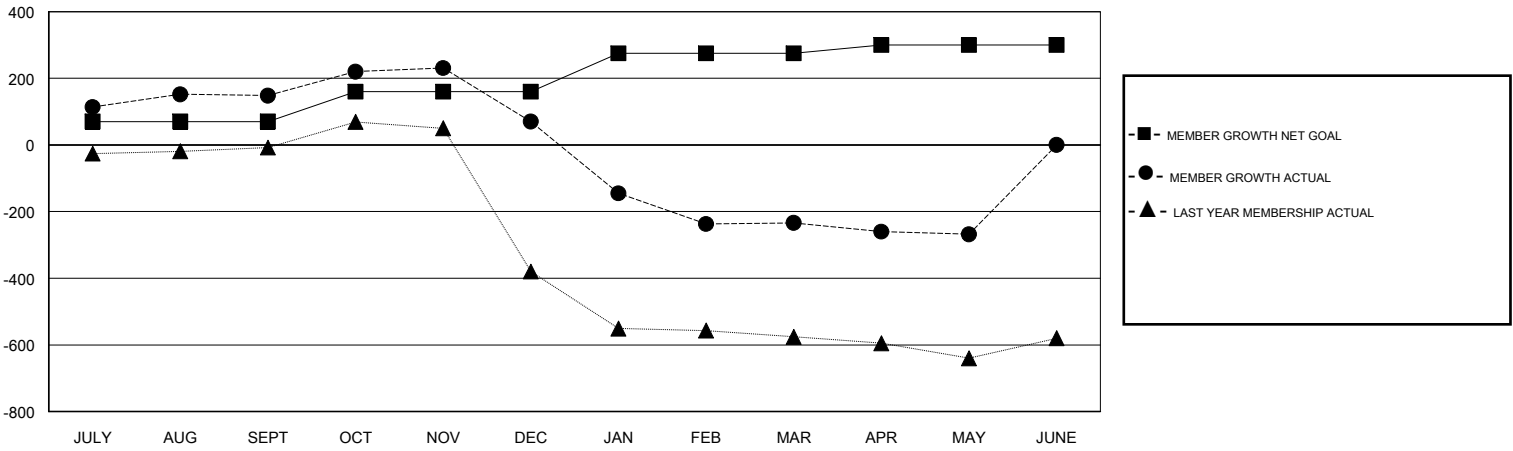
Clubs			
RESULTS FOR 2017-2018			
QUARTER	NEW CLUB GOAL	NEW CLUBS	DROPPED CLUBS
JULY/AUG/SEPT	1	3	0
OCT/NOV/DEC	2	1	6
JAN/FEB/MAR	2	1	6
APR/MAY/JUNE	0	0	0

Members			
RESULTS FOR 2017-2018			
QUARTER	MEMBER GROWTH NET GOAL	MEMBER GROWTH ACTUAL	DROPPED MEMBERS ACTUAL (including transfers)
JULY/AUG/SEPT	70	249	69
OCT/NOV/DEC	90	89	167
JAN/FEB/MAR	115	95	345
APR/MAY/JUNE	25	4	38

GOALS AND ACTUAL NEW CLUBS CUMULATIVE



GOALS AND ACTUAL MEMBERS CUMULATIVE



DROPPED CLUBS: 12

58 CLUBS OF 68 ADDED 1 OR MORE NEW MEMBERS

GENDER DISTRIBUTION	
MALE	1,247 (72.25%)
FEMALE	479 (27.75%)
Women Percentage Fiscal Year Goal: 30%	

DROPPED MEMBERS	
DECEASED	2
CLUB CANCELLED	419
OTHER	198
TOTAL	619

[CLICK HERE FOR CUMULATIVE MEMBERSHIP DATA](#)

TOTAL FAMILY UNIT MEMBERS	509
FAMILY MEMBERS PAYING HALF DUES	307